



IMS For Security

January 2009

Whether you run a security company, work in the public sector or national security, you need to know that you and your staff have the most efficient and reliable tools for communication. They need positioning information and in extreme situations even secured communication through encryption.

SinTech's innovative Internet Protocol Multimedia Subsystem IMS for Security uses GPS-enabled mobile phones to provide a centrally-based dispatcher with an overview of each member's position. It enables advanced, easy-to-use communications and monitoring - allowing your teams and dispatcher to quickly react to any situation.

TOTAL SECURITY COVER THROUGH ADVANCED MONITORING

SinTech understands that you need a low-cost and targeted solution that will remove the uncertainty of whether your security guards are effectively covering a facility - giving your Client the peace of mind that they have the best protection in place.

Flexible voice, text and even video communication

replaces conventional walkie-talkies while alarms, single button-press reporting and remote monitoring tools give the dispatcher an instant view of 'all quiet' status or 'emergency' events.

FROM THE GUARD'S END...

Simply equip each security guard with a mobile phone containing the SinTech IMS Client application which transforms the phone into a 'walkie-talkie'.

The guard's position is read from the phone's GPS device and transmitted to the dispatcher's PC and/or other colleagues who want the information.

The application will also join a special push-to-talk-over-cellular (PoC) Group, called the Dispatch PoC Group - used as the dispatch channel for all your

guards.

Because connection speed is vital in emergencies, the guard is able to talk to the dispatcher by pressing a single ‘push-to-talk’ button, just like using a walkie-talkie. It can be very useful for guards to be aware of each other’s location and status so it is also possible to select one or more colleague from the contact list in the application, see if they are available and start a walkie-talkie style conversation.

AND FROM THE DISPATCHER’S END...

The dispatcher runs an ordinary PC with the SinTech Dispatch application. The main screen contains a large map, showing the positions of all guards on the facility and when the last positioning information was received. Next to the map is a window displaying every guard for easy access.

If a guard’s phone does not send positioning information within a pre-defined time, an alarm can be set to alert the dispatcher, who can investigate further.

For extra peace of mind on critical assignments, the dispatcher can set up special messages that cause the guard’s phone to beep at specified intervals. The guard must respond to assure the dispatcher that all is well. Optionally, a guard can be required to enter a PIN code for even greater ID security.

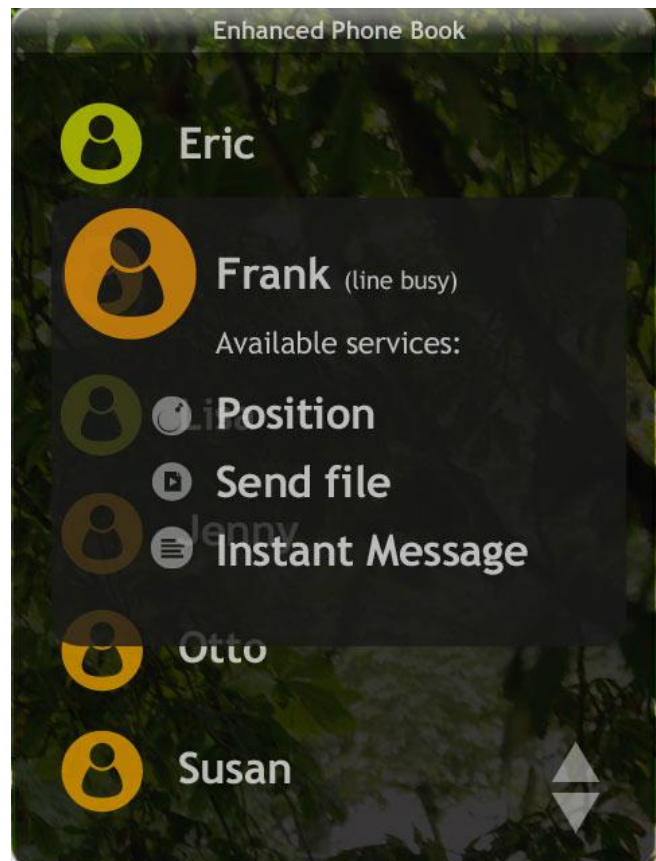
The Dispatch PoC Group channel is permanently set up, which allows the dispatcher to talk to all guards (or any subset of them) by pressing a button. If an individual guard answers - which only the dispatcher can hear - the dispatcher can simply setup a one-to-one conversation with that guard.

If guards do not reply, the dispatcher can send text messages instead.

The dispatcher can also set up “GeoFences”. These

define rules that trigger alerts when guards leave or enter a pre-defined area - ideal for ensuring that key or vulnerable areas are adequately covered.

A guard’s activities can be remotely examined, for example if the dispatcher thinks that a security guard is in need of assistance. The dispatcher can listen to the sound being picked up by the guard’s phone, stream video from the mobile phone to the SinTech Dispatch application and take ad-hoc readings of the phone’s location - potentially vital tools if a guard has pressed the emergency button but is not able to speak into the phone.



SinTech Client on Mobile Device



Technical Description

SinTech IMS for Security is based on an application for mobile phones and an application for desktop computers.

Based on modular architecture, the solution is perfectly tailored to meet the needs of your security guard operation.

Since IP Multimedia Subsystem (IMS) is used as the underlying bearer, it merely requires access to an operator with IMS infrastructure (including PoC (Push to talk over Cellular), XML Document Management (XDM) and presence services).

There are two main components to the IMS for Security solution: the SinTech IMS Client and the SinTech Dispatch application:

SINTECH IMS CLIENT

The SinTech IMS Client is an efficient application for inexperienced mobile phone users that gives simple access to the most vital features needed for your security guards to communicate and report their status - including emergencies.

FEATURES

Presence Enhanced Phonebook:

- The main screen shows a contacts list.
- Manage the contacts list: add, delete or modify contacts and create groups to organize a large set of contacts.
- Presence information is displayed for each contact - showing availability.
- Launch the communication services to any person(s) on the contact list.

Push To Talk:

- Auto-joins the Dispatch PoC Group when the application is started.
- Press a button to talk to the Dispatcher.
- Start walkie-talkie style conversations with one or more persons from the contacts list.
- Create PoC Groups with persons from the contacts list to make GroupTalk (pre-defined group) sessions and ChatTalk (where users can enter and leave at will) sessions.

Voice over IP (VoIP):

- Start IP-based phone calls with other persons carrying the SinTech IMS Client or administrators running the SinTech Dispatch application.

IMS Messaging:

- Send text messages to contacts or the dispatcher.
- Setup IM (Instant Messaging) sessions to chat with one or more contacts.
- Send and receive objects (such as images and audio/video clips) in the IM session.

Video Sharing:

- Send live video to the dispatcher or another person in the contact list, to share information about your location.

Inbox:

- Storage of incoming text messages and PoC Group advertisements.
- Allows adding received PoC Groups to the Group List.
- Launch communication services directly from the Inbox.

Call Log:

- Keep track of missed, received and established IMS sessions.
- Launch communication services directly from the Call Log.

Common:

- Use the speakerphone in the handset.
- Use a dedicated talk button.
- Visual and tone indication of the status in walkie-talkie style conversations - tones that indicate permission (or not) to speak and visual indication of the current speaker in an ongoing conversation.

SINTECH DISPATCH APPLICATION

The Dispatch Application is an excellent tool for centralized administrators (dispatchers) to control your security guards. Other office-based staff could also use it, if they need regular communication with your guards in the field.

FEATURES

Dispatcher:

- Creates the dispatch group; adds guards to a PoC Group and distributes this group information to all its members.
- Easy to setup a one-to-one call to a member of the dispatch group - the guard that answered the dispatch call.
- Dynamically populate the dispatch group based on certain criteria, e.g. within one kilometre from a specific location.

Desktop IMS Client:

- Easy management of contact lists and groups.
- Call Log: called/received/missed, timestamp, duration. Easy to setup sessions or send text messages to persons in the Call Log.
- ChatWindow: possible to open a dedicated window for text conversations with a contact.
- Multiple IMS Sessions: Can have several ongoing sessions with different contacts.

Ambient Control:

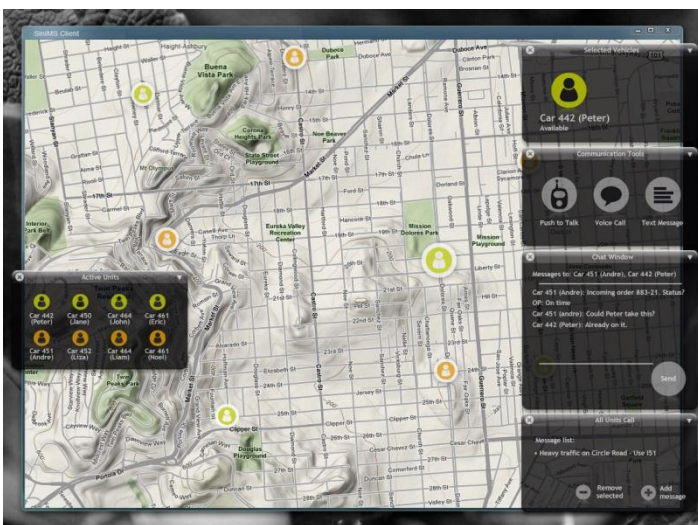
- Remotely manage the microphone, camera or positioning device on the mobile phone without the knowledge of the person carrying it.
- High security and no acknowledgement required from the phone prevent eavesdropping.

Desktop Application:

- Delivered with InstallShield, enabling fast and easy installation.
- Drag and drop contacts for creation of groups and movement of contacts between groups.

Common:

- Tone indications (as for the Mobile IMS Client)
- Both visual and audio indications for floor control.
- History logs.
- Possibility to save audio data (i.e. talk sessions).



SinTech Client on PC



Key benefits of IMS for Security

Ensure that the facility you are guarding is adequately covered: SinTech IMS Client, distributed to every guard in your security operation, will send their location to the centralized dispatcher. The dispatcher can view the position of all guards on a map.

Monitor the guarding of key or vulnerable areas: Setup 'GeoFences' and be alerted when guards enter or leave a certain area.

Increase efficiency by an integrated means of communication: The dispatcher sees the position of the guards in real-time. Text messages can be sent and walkie-talkie style conversations can be started with some simple clicks in the SinTech Dispatch Application. One or multiple guards can be addressed.

Enhance guard status reporting and emergency handling: use alarms and send prompts for regular status reporting back to the dispatcher - replies can be PIN coded for ID security.

Monitor a guard's activities discretely: listen to ambient sound, view video and obtain a location update from a guard's phone - potentially vital for emergency situations.

Reduce your communication costs: SinTech IMS for Security works with standard mobile phones with GPS support - no expensive hardware is needed. The mobile network (for example, 3G, GPRS or WCDMA) is used as communication bearer.

A complete digital solution: IMS is available where there is mobile phone coverage. So there are no more limitations with analogue radio systems and

walkie-talkie. The digital audio gives clear and secure conversations.

Finally, the best news of all... in addition to the efficiency boost that SinTech's IMS for Security will give to your security guard operation, it does not require a huge and expensive investment.

ALL YOU NEED IS:

Access to a mobile phone operator that has an IMS-enabled infrastructure,

Standard mobile phones based on Symbian or Windows Mobile with GPS support,

Any ordinary desktop PC to run the SinTech Dispatch application.

Customized to your requirements

Because SinTech's IMS solutions are based on a modular building block architecture, we are able to easily customize features to exactly match your operational requirements - providing you with the solution you would have designed!

Want to know more?

If you want to know more about how SinTech's IMS for Security solution can be rapidly and cost-effectively applied, including any further technical information, contact us on:

Tel: <+46705115474>

Web: <www.sintech.se>

Email: <sales@sintech.se>

SinTech - Sindarin Technologies AB is supporting governments and corporations by creating a more efficient, safer and more cost efficient communication solution by utilizing the latest communication technology standard: IMS, IP Multimedia Subsystem. SinTech's communication suite is based on open standards and includes means of communication such as Voice over IP (VoIP), Walkie Talkie, Messaging/Chat, Video Communication and File Sharing. The communication suite can be further enhanced with support for encryption as well as positioning.

SinTech's communication suite is available and downloadable for a large number of mobile devices as well as desktop computers.

Copyright ©

SinTech - Sindarin Technologies AB 2009